

# CGIAR Research Program on Policies, Institutions and Markets

## PRIORITY-SETTING SESSION RESULTS

### New Delhi, July 3, 2012

#### *I. Priority-setting process*

In a preliminary step (Step 0), participants were invited to answer questions about their backgrounds.

The priority-setting process *per se* included three main steps:

- In the first step (Step 1), participants assigned percentage weights to the four main objectives of the program, namely: Reduce rural poverty; Increase food security, nutrition and health; Improve sustainability of natural resources; Enhance opportunities for and participation of women. For each objective, participants could choose between seven possible weight values: 0%, 10%, 20%, 30%, 40%, 50% and 60%. The sum of the four weights chosen by each participant had to be equal to 100%. The outputs of Step 1 were average percentage weights across participants for the four main objectives of the program.
- In Step 2, participants broke out into 4 groups, and each group discussed the relative importance of the 10 subthemes of the program in achieving one of 4 the program objectives. Participants scored the contribution of subthemes between 1 and 5, where 1 meant a very low contribution, 2 a rather low contribution, 3 a medium contribution, 4 a rather high contribution and 5 a very high contribution to the objective. (The scores were independent from each other.) The outputs of Step 2 were “intermediate scores” of each subtheme for each of the four objectives. By multiplying the average weights of the objectives (Step 1) by the intermediate scores of each subtheme for each objective (Step 2), final scores were produced for the ten subthemes.
- In Step 3, participants gathered in plenary again to determine an overall ranking of the ten subthemes, based on each subtheme’s overall contribution to the four main objectives of the program. 1 was the highest rank, corresponding to the most important subtheme, and 10 the lowest rank, corresponding to the least important subtheme. Participants could not use the same rank for two subthemes. By adding the ranks across participants, a final ranking of the ten subthemes was produced (the lowest sum of ranks corresponded to the most important subtheme and the highest sum of ranks to the least important subtheme).

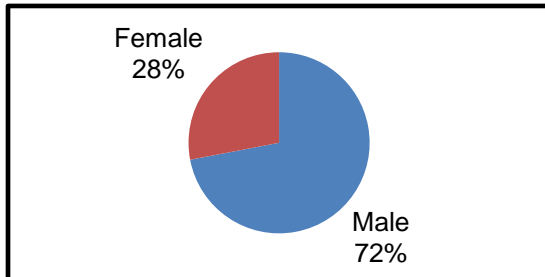
All steps made use of interactive digivoting devices, that allowed the average results of the voting to be displayed instantly.

After the workshop, results were corrected for outliers/obvious mistakes. Depending on the questions, between 37 and 50 answers were taken into account.

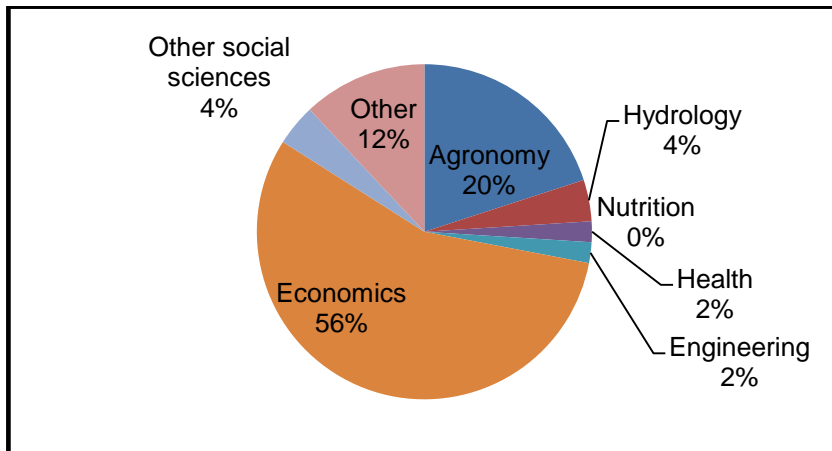
## II. Results

### 1) Background of participants (Step 0)

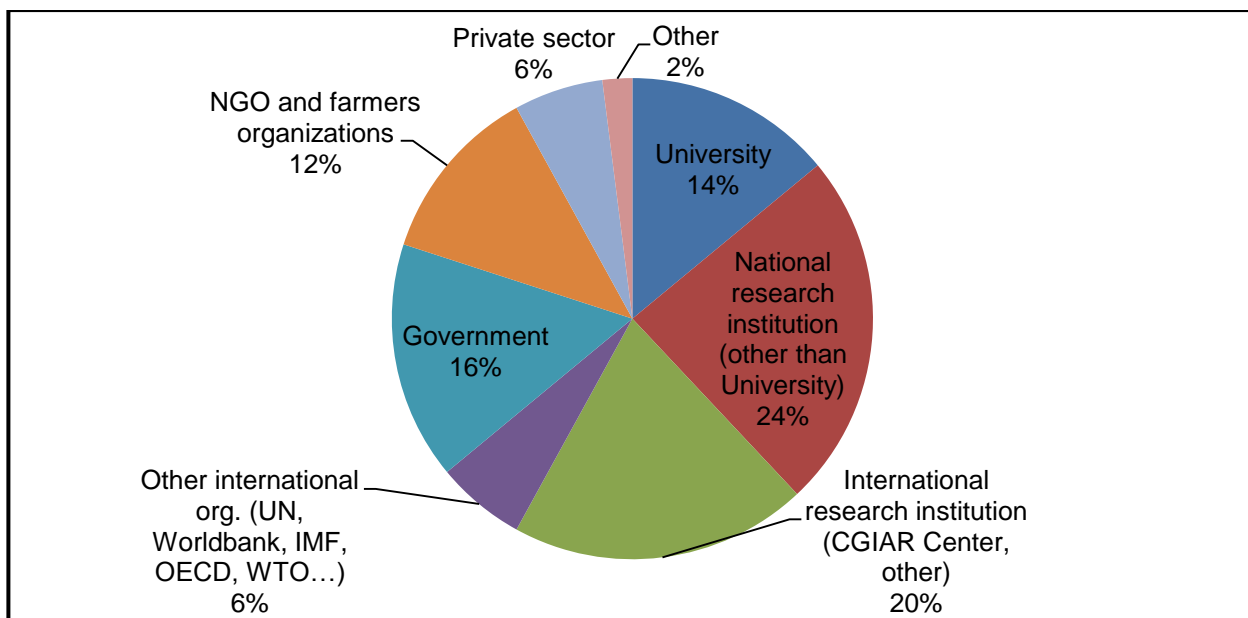
#### Gender



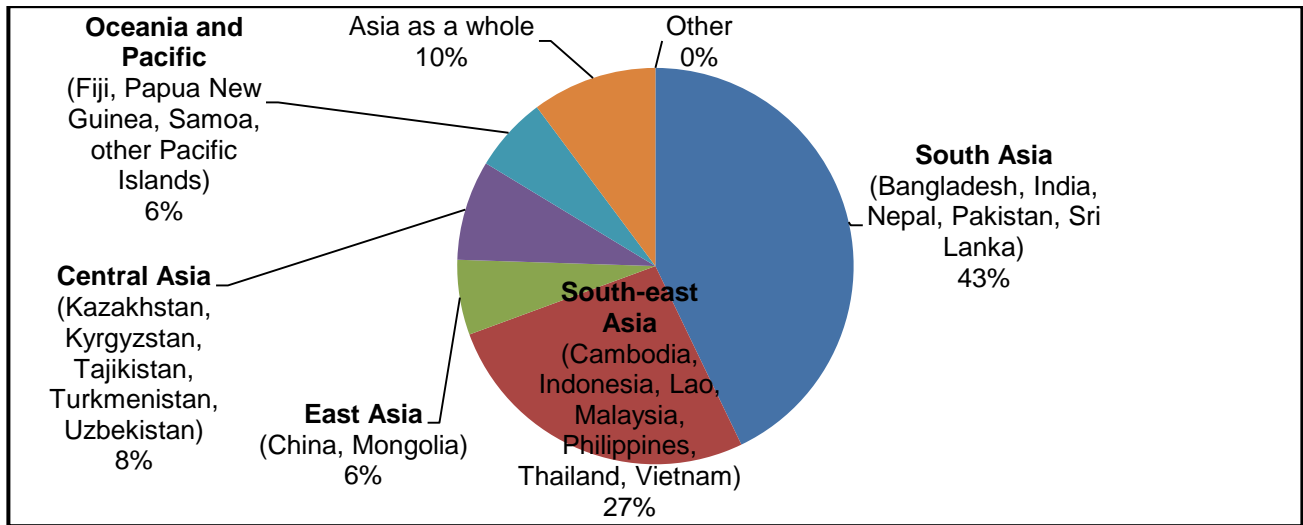
#### Main field of expertise



#### Type of organization



Main region of expertise

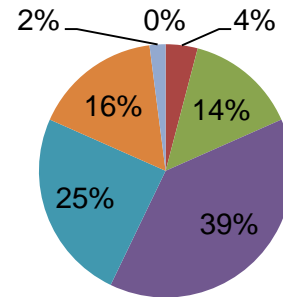


## 2) Weights of program objectives (Step 1)

### Assign a weight to the objective:

#### Reduce rural poverty

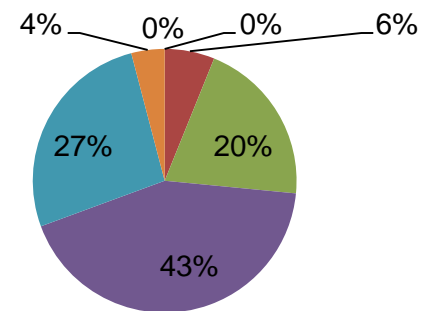
	Responses	
	Nb	Percent
0%	0	0.00%
10%	2	4.08%
20%	7	14.29%
30%	19	38.78%
40%	12	24.49%
50%	8	16.33%
60%	1	2.04%
<b>Total</b>	<b>49</b>	<b>100.00%</b>



■ 0% ■ 10% ■ 20% ■ 30% ■ 40% ■ 50% ■ 60%

### Assign a weight to the objective: Increase food security, nutrition, & health

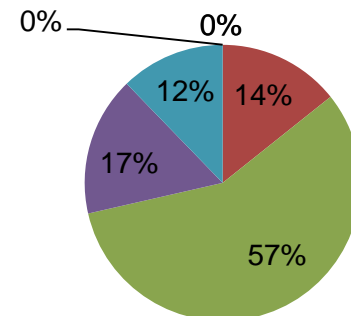
	Responses	
	Nb	Percent
0%	0	0.00%
10%	3	6.12%
20%	10	20.41%
30%	21	42.86%
40%	13	26.53%
50%	2	4.08%
60%	0	0.00%
<b>Total</b>	<b>49</b>	<b>100.00%</b>



■ 0% ■ 10% ■ 20% ■ 30% ■ 40% ■ 50% ■ 60%

### Assign a weight to the objective: Improve sustainability of natural resources

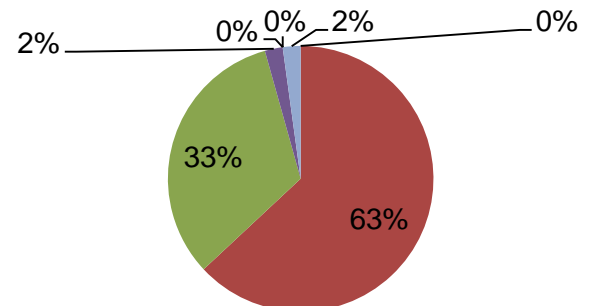
	Responses	
	Nb	Percent
0%	0	0.00%
10%	7	14.29%
20%	28	57.14%
30%	8	16.33%
40%	6	12.24%
50%	0	0.00%
60%	0	0.00%
<b>Total</b>	<b>49</b>	<b>100.00%</b>



■ 0% ■ 10% ■ 20% ■ 30% ■ 40% ■ 50% ■ 60%

### Assign a weight to the objective: Enhance opportunities for and participation of women

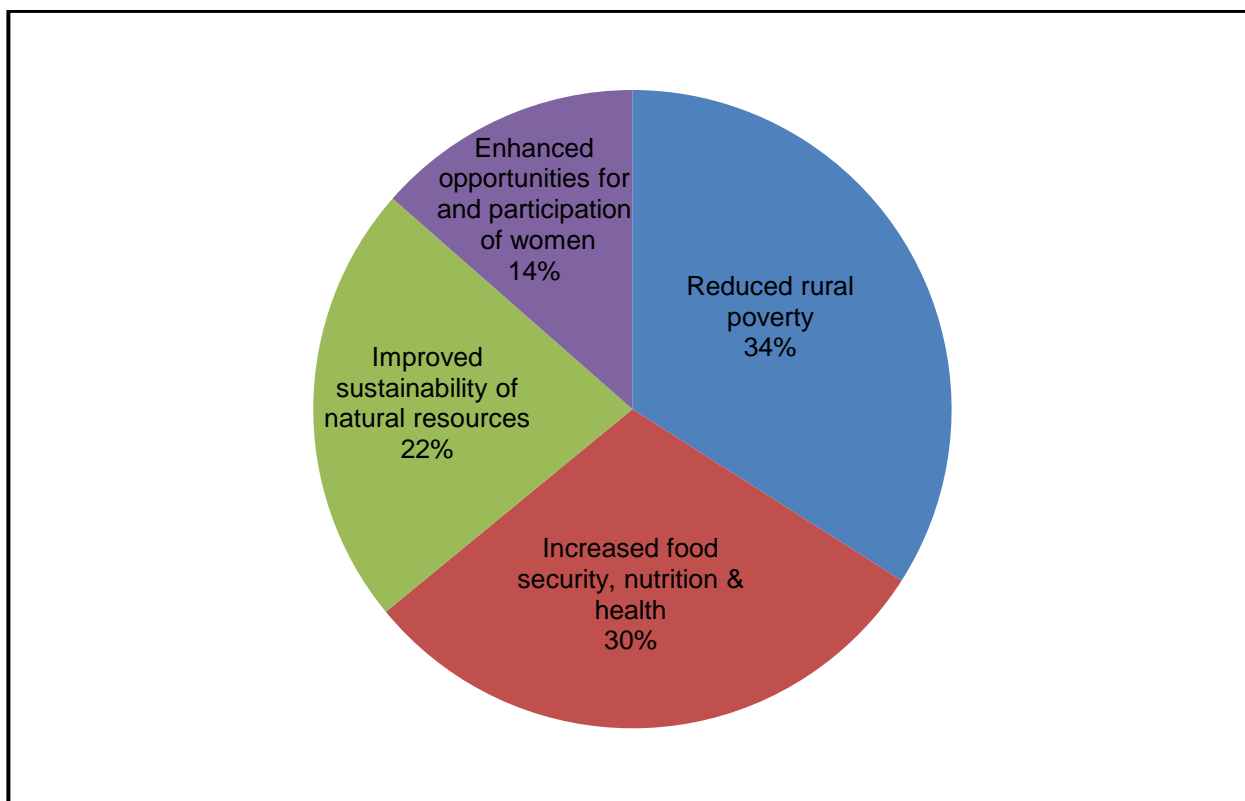
	Responses	
	Nb	Percent
0%	0	0.00%
10%	29	63.04%
20%	15	32.61%
30%	1	2.17%
40%	0	0.00%
50%	0	0.00%
60%	1	2.17%
<b>Total</b>	<b>46</b>	<b>100.00%</b>



■ 0% ■ 10% ■ 20% ■ 30% ■ 40% ■ 50% ■ 60%

Average weight of program objectives

<b>Objective</b>	<b>Average</b>	<b>Std Dev</b>
Reduced rural poverty	34.02%	11.16%
Increased food security, nutrition & health	30.03%	9.46%
Improved sustainability of natural resources	22.42%	8.61%
Enhanced opportunities for and participation of women	13.53%	9.09%
<b>Total</b>	<b>100%</b>	



### 3) *Intermediate scores of subthemes for each objective (Step 2)*

#### Reduce Rural Poverty

<b>Subtheme</b>	<b>ST1.1</b>	<b>ST1.2</b>	<b>ST1.3</b>	<b>ST1.4</b>	<b>ST2.1</b>	<b>ST2.2</b>	<b>ST2.3</b>	<b>ST2.4</b>	<b>ST3.1</b>	<b>ST3.2</b>
Average score	3.60	3.67	4.40	3.83	4.00	3.40	2.67	3.83	3.83	3.17

#### Increase Food Security, Nutrition and Health

<b>Subtheme</b>	<b>ST1.1</b>	<b>ST1.2</b>	<b>ST1.3</b>	<b>ST1.4</b>	<b>ST2.1</b>	<b>ST2.2</b>	<b>ST2.3</b>	<b>ST2.4</b>	<b>ST3.1</b>	<b>ST3.2</b>
Average score	3.83	4.17	4.50	3.00	3.54	3.85	3.38	3.23	4.23	3.00

#### Improve Sustainability of Natural Resources

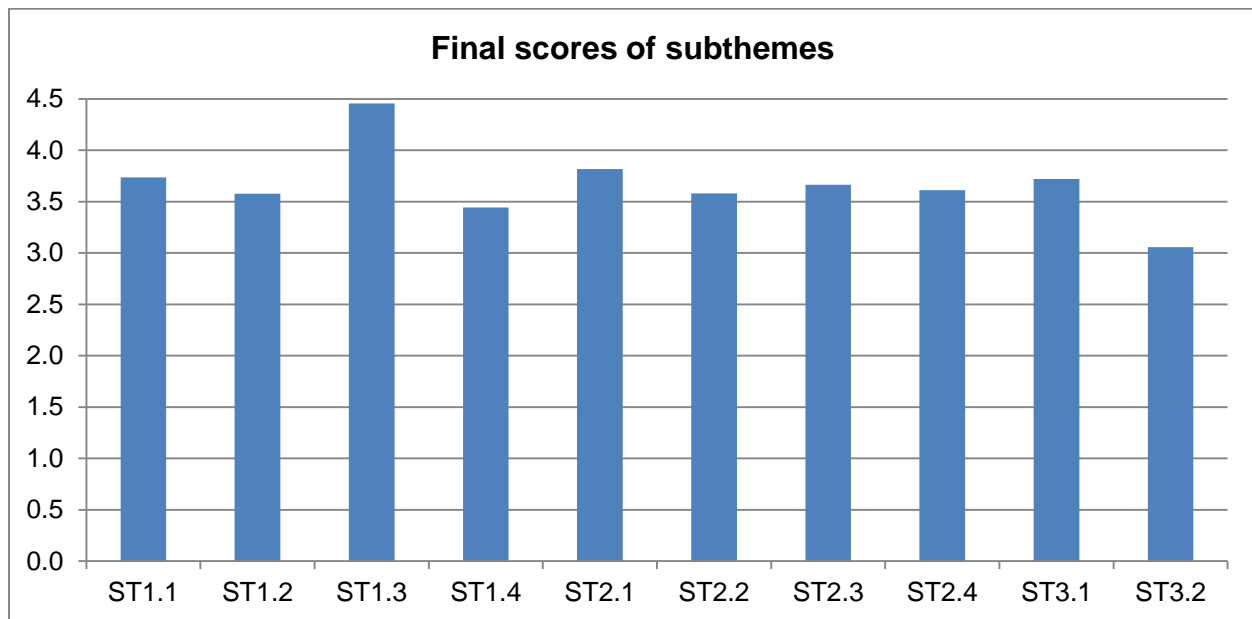
<b>Subtheme</b>	<b>ST1.1</b>	<b>ST1.2</b>	<b>ST1.3</b>	<b>ST1.4</b>	<b>ST2.1</b>	<b>ST2.2</b>	<b>ST2.3</b>	<b>ST2.4</b>	<b>ST3.1</b>	<b>ST3.2</b>
Average score	4.25	3.00	4.75	2.50	3.50	3.25	4.75	3.25	3.00	3.00

#### Enhance Opportunities for and Participation of Women

<b>Subtheme</b>	<b>ST1.1</b>	<b>ST1.2</b>	<b>ST1.3</b>	<b>ST1.4</b>	<b>ST2.1</b>	<b>ST2.2</b>	<b>ST2.3</b>	<b>ST2.4</b>	<b>ST3.1</b>	<b>ST3.2</b>
Average score	3.00	3.00	4.00	5.00	4.50	4.00	5.00	4.50	3.50	3.00

#### 4) Final scores of subthemes (Computed from Step 1 and Step 2)

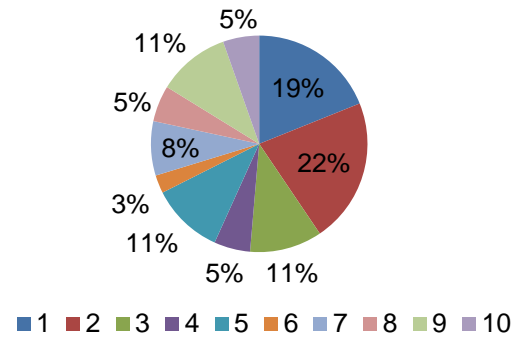
	<b>Average</b>
<b>Subtheme 1.1</b> Foresight and strategic scenarios	<b>3.7</b>
<b>Subtheme 1.2</b> Macroeconomic, trade and investment policies	<b>3.6</b>
<b>Subtheme 1.3</b> Production and technology policies	<b>4.5</b>
<b>Subtheme 1.4</b> Social protection policies	<b>3.4</b>
<b>Subtheme 2.1</b> Policy processes	<b>3.8</b>
<b>Subtheme 2.2</b> Governance of rural services	<b>3.6</b>
<b>Subtheme 2.3</b> Collective action and property rights	<b>3.7</b>
<b>Subtheme 2.4</b> Institutions to strengthen the assets of the poor	<b>3.6</b>
<b>Subtheme 3.1</b> Innovations across the value chain	<b>3.7</b>
<b>Subtheme 3.2</b> Impact of upgrading value chains	<b>3.1</b>



### 5) Ranking of subthemes (Step 3)

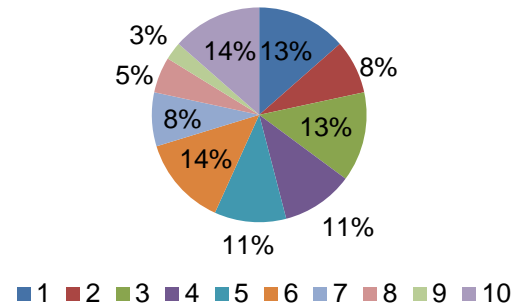
#### Assign a rank to ST1.1 "Foresight and strategic scenarios"

	Responses	
	Nb	Percent
1	7	18.92%
2	8	21.62%
3	4	10.81%
4	2	5.41%
5	4	10.81%
6	1	2.70%
7	3	8.11%
8	2	5.41%
9	4	10.81%
10	2	5.41%
<b>Total</b>	<b>37</b>	<b>100.00%</b>



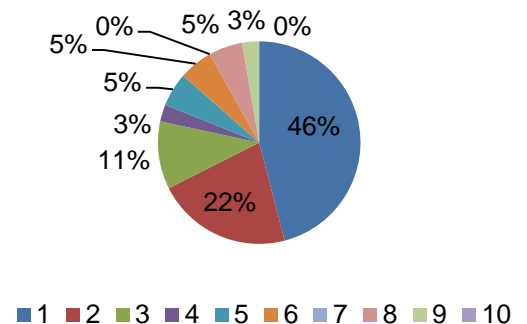
#### Assign a rank to ST1.2 "Macroeconomic, trade and investment policies"

	Responses	
	Nb	Percent
1	5	13.51%
2	3	8.11%
3	5	13.51%
4	4	10.81%
5	4	10.81%
6	5	13.51%
7	3	8.11%
8	2	5.41%
9	1	2.70%
10	5	13.51%
<b>Total</b>	<b>37</b>	<b>100.00%</b>



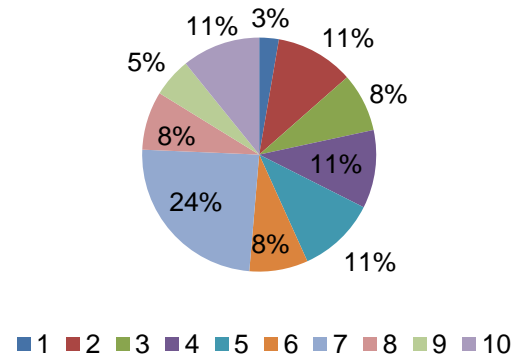
#### Assign a rank to ST1.3 "Production and technology policies"

	Responses	
	Nb	Percent
1	17	45.95%
2	8	21.62%
3	4	10.81%
4	1	2.70%
5	2	5.41%
6	2	5.41%
7	0	0.00%
8	2	5.41%
9	1	2.70%
10	0	0.00%
<b>Total</b>	<b>37</b>	<b>100.00%</b>



#### Assign a rank to ST1.4 "Social protection policies"

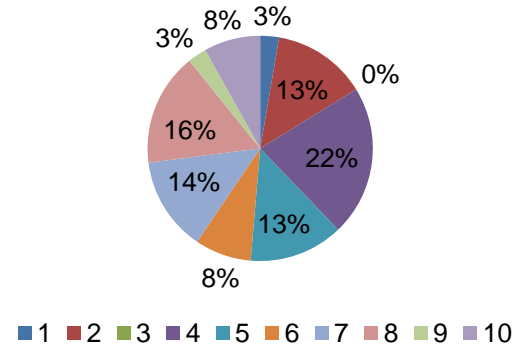
	Responses	
	Nb	Percent
1	1	2.70%
2	4	10.81%
3	3	8.11%
4	4	10.81%
5	4	10.81%
6	3	8.11%
7	9	24.32%
8	3	8.11%
9	2	5.41%
10	4	10.81%
<b>Total</b>	<b>37</b>	<b>100.00%</b>





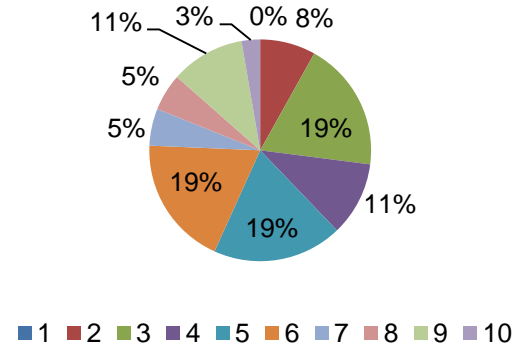
**Assign a rank to ST2.1 "Policy processes"**

	Responses	
	Nb	Percent
1	1	2.70%
2	5	13.51%
3	0	0.00%
4	8	21.62%
5	5	13.51%
6	3	8.11%
7	5	13.51%
8	6	16.22%
9	1	2.70%
10	3	8.11%
<b>Total</b>	<b>37</b>	<b>100.00%</b>



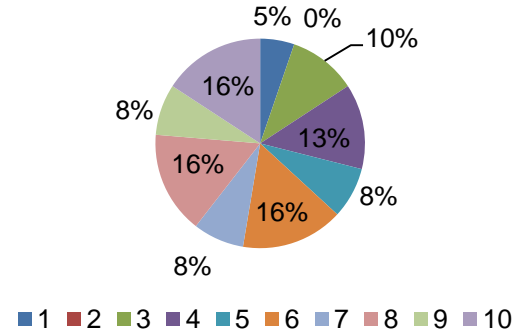
**Assign a rank to ST2.2 "Governance of rural services"**

	Responses	
	Nb	Percent
1	0	0.00%
2	3	8.11%
3	7	18.92%
4	4	10.81%
5	7	18.92%
6	7	18.92%
7	2	5.41%
8	2	5.41%
9	4	10.81%
10	1	2.70%
<b>Total</b>	<b>37</b>	<b>100.00%</b>



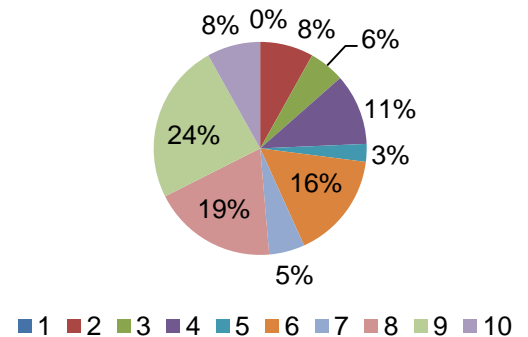
**Assign a rank to ST2.3 "Collective action and property rights"**

	Responses	
	Nb	Percent
1	2	5.26%
2	0	0.00%
3	4	10.53%
4	5	13.16%
5	3	7.89%
6	6	15.79%
7	3	7.89%
8	6	15.79%
9	3	7.89%
10	6	15.79%
<b>Total</b>	<b>38</b>	<b>100.00%</b>



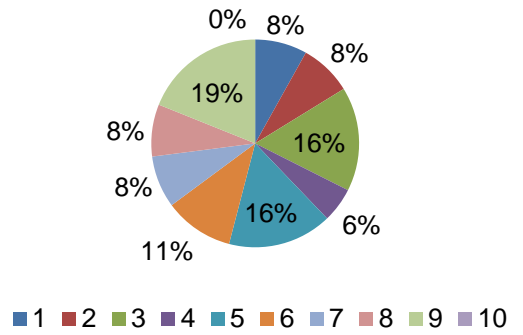
**Assign a rank to ST2.4 "Institutions to strengthen the assets of the poor "**

	Responses	
	Nb	Percent
1	0	0.00%
2	3	8.11%
3	2	5.41%
4	4	10.81%
5	1	2.70%
6	6	16.22%
7	2	5.41%
8	7	18.92%
9	9	24.32%
10	3	8.11%
<b>Total</b>	<b>37</b>	<b>100.00%</b>



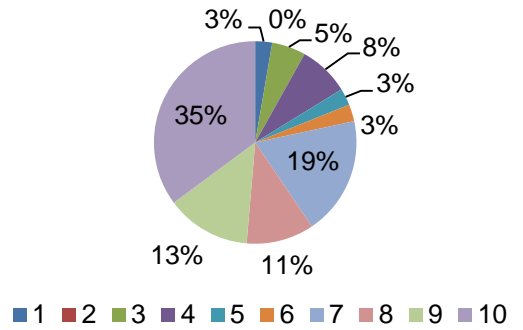
**Assign a rank to ST3.1 "Innovations across the value chain"**

	Responses	
	Nb	Percent
1	3	8.11%
2	3	8.11%
3	6	16.22%
4	2	5.41%
5	6	16.22%
6	4	10.81%
7	3	8.11%
8	3	8.11%
9	7	18.92%
10	0	0.00%
<b>Total</b>	<b>37</b>	<b>100.00%</b>



**Assign a rank to ST3.2 "Impact of upgrading value chains"**

	Responses	
	Nb	Percent
1	1	2.70%
2	0	0.00%
3	2	5.41%
4	3	8.11%
5	1	2.70%
6	1	2.70%
7	7	18.92%
8	4	10.81%
9	5	13.51%
10	13	35.14%
<b>Total</b>	<b>37</b>	<b>100.00%</b>



Final ranking of program subthemes

	<b>Sum</b>
<b>Subtheme 1.3</b> Production and technology policies	<b>96</b>
<b>Subtheme 1.1</b> Foresight and strategic scenarios	<b>162</b>
<b>Subtheme 1.2</b> Macroeconomic, trade and investment policies	<b>188</b>
<b>Subtheme 2.2</b> Governance of rural services	<b>196</b>
<b>Subtheme 3.1</b> Innovations across the value chain	<b>197</b>
<b>Subtheme 2.1</b> Policy processes	<b>208</b>
<b>Subtheme 1.4</b> Social protection policies	<b>217</b>
<b>Subtheme 2.3</b> Collective action and property rights	<b>235</b>
<b>Subtheme 2.4</b> Institutions to strengthen the assets of the poor	<b>250</b>
<b>Subtheme 3.2</b> Impact of upgrading value chains	<b>286</b>

